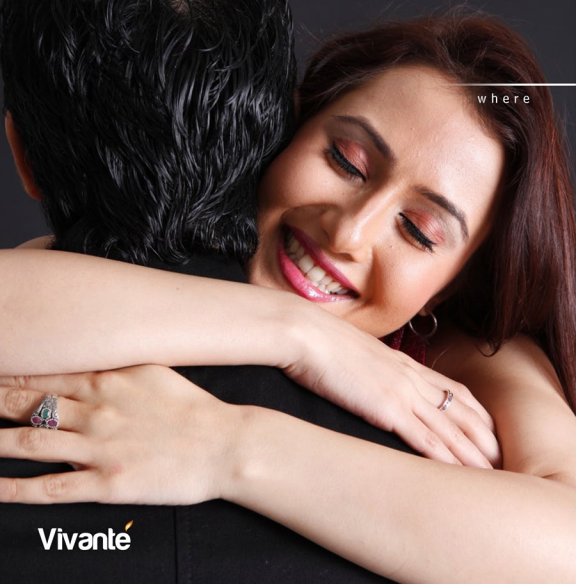




**Vivante**

Our-Kind-Of-Home@Sector137.Noida

 **Gulshan**  
HOMZ



where

**Vivante**

**your togetherness is rekindled everyday**

In a daily hustle bustle of professional demands, togetherness is often fades away. At Vivante, we have kept your quality time as prime motif in designing amenities, landscaping and activities that would certainly make your amber for each other. Lush and soothing surrounding, in-compound convenience of cozy rendezvous-joints would spare you from taking a tiring trip outside and making the most of your precious time.

**Club 'Vitare'**  
**Immaculate Landscaping**  
**Karaoke Theme Restaurant 'Vibgyor'**  
**Aerobic Dance Floor**  
**Coffee Shop**





where

**Vivante**

## Healthy habits blend with luxurious living

In pursuit of our professional goals, health often takes a back seat. But in longer run it negatively impacts our productivity and well being. At Vivante, you could choose from a wide range of pampering activities that shall help you lead an energetic, healthy and dynamic life.

**Swimming Pool**

**Steam/Sauna/Massage Rooms**

**Yoga Centre**

**Indoor Games**

**Jogging Track**

**Badminton**

**Basket Ball Courts [Half Court]**

**AC Gymnasium with Trainer**





where

**Vivante**

memories would be etched every day

Growing children enliven our own adulthood. Sharing their unbounded joy, curiosity and growth makes our lives worth celebrating for. At Vivante, we understand that children need tender care, attention and loads of fun for making a very memorable childhood. A range of facilities would be provided to take care of children's all recreational and developmental needs so that they could become as responsible and caring adult as you are.

**Day Care Facility**

**On-call baby sitting**

**Kids Pool**

**Hobby Centre**

**Special Play-pan for Smaller Children**



where

NOIDA EXPRESSWAY  
--- 8 Minute Drive ---

Amity Chowk  
[Noida]

you will have best of both worlds

At Vivante, you would enjoy excellent location advantage with lush green surrounding and seamless connectivity. Located right on the Noida-Greater Noida expressway, it will offer natural retreat as well as excellent metropolitan convenience and vibrance. A laidback industrial town, a decade back, Noida today is a jewel city of North India brimming with unparalleled energy and growth. Spread over 20,316 hectares, it offers a pollution free high standard of living and highly supportive infrastructure of a well integrated Industrial township. Envious connectivity through a network of roads, national highways, flyovers, and proximity to prestigious institutions, shopping centres and entertainment hubs makes Noida a purple city of modern lifestyle.



Vivante

Indicative map, not to scale



where

**Vivante**

adventure would take you to a higher plane

In addition to providing host of indoor and outdoor sports facilities, we at Vivante, will take you through the new-age experience of trendy fitness and adventurous activities like Curved Ramp Skating, Artificial Mountain Climbing, Kick Boxing, Mechanical Rodeo Rides (PBR) and Trampolines. With best of our knowledge, this would be first of its kind in any residential project in India.

**Curved Skating Ramps**  
**Artificial Mountain Climbing**  
**Kick Boxing Ring**  
**Gymnasium**  
**Mechanical Rodeo Rides [PBR]**  
**Trampoline**





where

nature inspired construction meets impeccable execution

Gulshan Homz is highly committed group of professional individuals who take great pleasure in over performing to all customer expectations on consistent basis. Envisioned and founded by Mr. Gulshan Nagpal, Gulshan Homz has completed glorious 20 years of unparalleled residential offerings with thousands of happy families being our true brand ambassadors.



GC GrandStreet

GC Centrum

GC Emerald Heights

GC Grand

Homes 121

**ISO 9001:2008 Certified**

**Deployment of Most Modern Construction Processes**

**Low Carbon Footprint Technology**

**Tapping Optimum Natural Resources**

**Super Earthquake Resistant Construction**







where

**Vivante**

you are taken care of in sickness and health

Health is foundation of happiness. At Vivante, we would not only present you healthy life-style inducing activities and new-age addictive adventures, but will also create medical support structure that looks after in hour of your need. Right within your compound, you will have your own resident OPD with mainstream and alternate medical doctors. For emergency support, we will assist you in timely medical care and access to best hospitals though a prompt hot line.

- Regular In-compound OPD**
- Ambulance on Call**
- Doctor on Call**
- Stretcher Lifts**
- Wheel Chair for Elderly and Sick**
- Toilet for Physically Challenged**







where

**Vivante**

Indicative map, not to scale

life would lead to a beautiful rhythm

Going beyond simple rectangular living, we understand that your life is sleek, infinitely flexible, multi-dimensional, and open. And such life requires most proactive support system taking care of all your requirements and needs. Conceptualised for quintessential living, Vivante would offer everything you would need in daily life making your days completely stress free and rejuvenating.

**AC Unisex Beauty Salon**

**AC Banquet/Party Hall**

**Business Lounge**

**Vivante Bus Shelter**

**Laundry Services**

**Cabs on Call**



where



**Vivanté**

technology is tendered with human care

We believe that technology deployment alone is insufficient without warm human care and support. Vivante offers you a thoroughly planned care-enabled system that shall be on your side in all aspects of your comfortable living. Best of technological tools will be at your service helping you immensely in security, support, entertainment and care. Driven by smart and customised applications, our systems would assist you in communicating, integrating and collaborating in most desirous manner.

**Internet Connectivity**  
**24x7 Security**  
**Intercom Connectivity**  
**Resident Net**  
**Customer Care Centre**





where

**Vivante**

your investments bear rich dividends

We respect and understand the value of your hard-earned money. And like with all our previous projects, Vivante promises smart gains for every rupee of your investment. The apartments come in comfortable sizes that fit well in your budget. Convenient stage-wise payment plan and wide finance support from leading banks and institutions takes care of your varied financing needs. Our handpicked location, project design and next door metro connectivity will ensure quantum growth of your investment exceeding trends and may be your own expectations.

**Smart Return on Investment**  
**Walkable Proposed Metro Connectivity**  
**Easy Finance Options from Leading Banks**  
**Convenient Stage-wise Payment Plan**





## Premium Specifications

### MAIN DOOR

- Additional MS steel safety door with wiremesh.

### FOORING

- Vitrified tiles in drawing / dining / bedrooms and kitchen.
- Anti skid ceramic tiles in toilets and balcony.

### DOOR & WINDOWS

- External doors and windows made of aluminium.
- Internal hardwood frames with flush doors

### KITCHEN

- Granite top working platform.
- Double bowl stainless steel sink.
- Ceramic glazed tiles 2' above working platform.
- One R.O. unit in each flat.

### TOILET

- Anti skid ceramic floor tiles.
- Ceramic tiles upto 7' height.

### INSIDE WALL FINISH

- Inside walls with pop punning and plastic paint.

### EXTERNAL FACADE

- Exterior in superior paint finish.

### ELECTRICAL

- Copper wiring in concealed P.V.C. conduits.
- Sufficient light and power points.
- Provision for T.V., telephone points in living room and all bedroom
- Provision for video door phone.
- Exhaust fan in all the toilets & kitchen.
- One tubelight in each room.

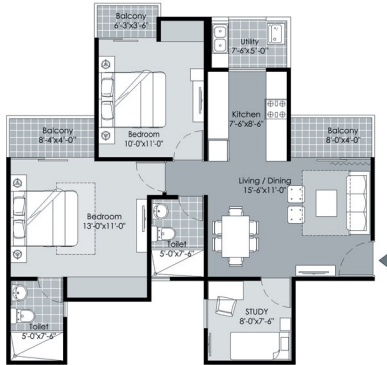
### SUPER STRUCTURE

- Earthquake – resistant R.C.C. frame structure.



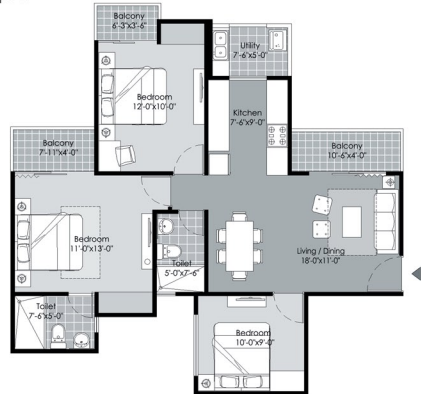
## Type A

2 Bed + 2 Toilet + Study  
1080 Sq. Ft.



## Type B

3 Bed + 2 Toilet (Small)  
1175 Sq. Ft.

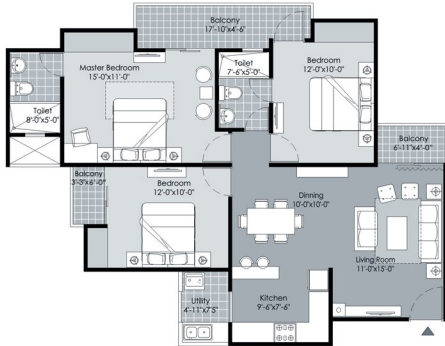


Plot not to scale  
Tentative Unit Plan

Plot not to scale  
Tentative Unit Plan

## Type C

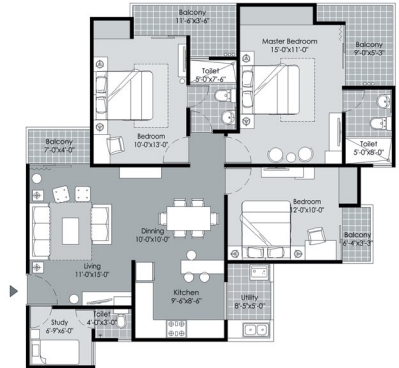
3 Bed + 2 Toilet (Big)  
1395 Sq. Ft.



Plot not to scale  
Tentative Unit Plan

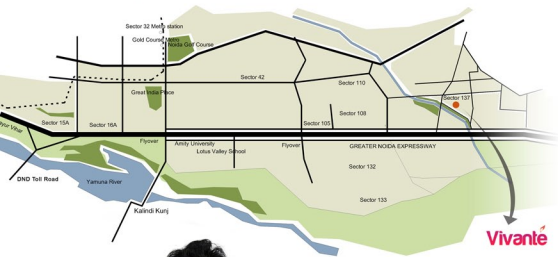
## Type D

3 Bed + 3 Toilet + Study  
1560 Sq. Ft.



Plot not to scale  
Tentative Unit Plan

## Location Map

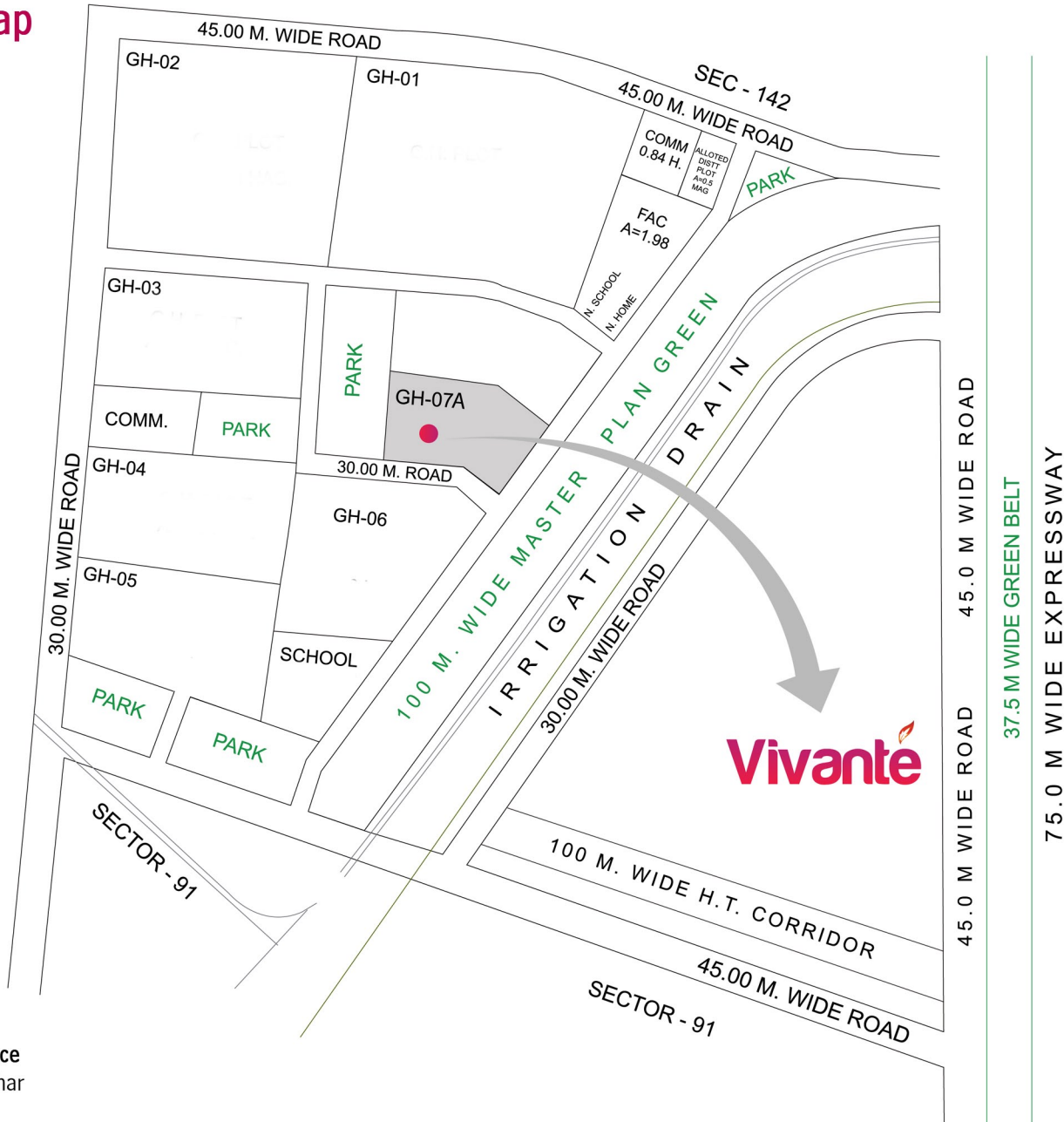


At Gulshan Homz,  
every structure is conceived in four dimensions.  
Length, breadth, height & passion.





# Site Map



**Corporate Office**  
 4, Dayanand Vihar  
 Delhi - 110 092  
 Tel: +91 11 22375246  
 Email: [info@vivante.co.in](mailto:info@vivante.co.in)  
[www.vivante.co.in](http://www.vivante.co.in)

Design: Digimarc Media  
 contact@digimarc.in

The furniture and fixtures shown in this brochure are not part of offering